



## Northumberland Park & White Hart Lane Area Forum and Committee

THURSDAY, 5TH FEBRUARY, 2015

6.30 pm

**VENUE: BRUCE CASTLE MUSEUM, LORDSHIP LANE, N17 8NU**

*\*Ward Councillors will be available from 6pm until 6.30pm to discuss individual issues of concern to local residents*

### **MEMBERS OF THE AREA COMMITTEE/FORUM:**

Councillors Adje, Amin, Bevan, Bull, Peacock and Stennett (Chair)

### **AREA FORUM**

1. **Tottenham Regeneration** **6.35pm – 7.05pm**  
To discuss the latest developments on the High Road West Masterplan.
  
2. **Planning Policy and Development** **7.05pm – 7.35pm**  
To follow up on these strategic planning policy documents for Haringey:
  - the Site Allocations Development Plan Document (DPD)
  - the Development Management DPD
  - the Tottenham Area Action Plan.
  
3. **GP Provision in North Tottenham** **7.35pm – 8.15pm**  
A discussion on the lack of GP practices in Tottenham with the Assistant Director of Primary Care Quality and Development, Haringey Clinical Commissioning Group (CCG)
  
4. **Haringey Cycling** **8.15pm - 8.30pm**  
To receive information about the cycling projects and initiatives, funded through the Smarter Travel Programme (briefing attached).

## **5. Parish Pump**

**8.30pm – 8.50pm**

Opportunity for residents and community groups to share events, ideas and issues.

*Please contact [Natalie.layton@haringey.gov.uk](mailto:Natalie.layton@haringey.gov.uk) by 10am on the day of the meeting to arrange to speak during Parish Pump*

The Area forum will be followed by a public Area Committee where any actions or recommendations will be agreed.

## **AREA COMMITTEE**

### **1. APOLOGIES**

### **2. DECLARATIONS OF INTEREST**

A member with a disclosable pecuniary interest or a prejudicial interest in a matter who attends a meeting of the authority at which the matter is considered:

- (i) Must disclose the interest at the start of the meeting or when the interest becomes apparent, and
- (ii) May not participate in any discussion or vote on the matter and must withdraw from the meeting room.

A member who discloses at a meeting a disclosable pecuniary interest which is not registered in the Register of Members' Interests or the subject of a pending notification must notify the Monitoring Officer of the interest within 28 days of the disclosure.

Disclosable pecuniary interests, personal interests and prejudicial interests are defined at Paragraphs 5-7 and Appendix A of the Members' Code of Conduct.

### **3. MINUTES**

To approve the minutes of the meeting held on 11 November 2014.

### **4. ISSUES RAISED AT THE AREA FORUM**

#### **a. Planning Policy**

To record any comments through the Area Forum discussion of: the Site Allocations Development Plan Document (DPD), the Development Management Document, and the Tottenham Area Action Plan.

### **5. FUTURE MEETINGS, VENUES AND AGENDA ITEMS**

To note the date of the next meetings below and discuss venues and potential agenda items.

Thursday 12 March 2015

## 6. ANY OTHER URGENT BUSINESS

Bernie Ryan  
Assistant Director – Corporate Governance and  
Monitoring Officer  
Level 5  
River Park House  
225 High Road  
Wood Green  
London N22 8HQ

Natalie Layton X2919  
Principal Committee Coordinator  
Level 5  
River Park House  
225 High Road  
Wood Green  
London N22 8HQ

Tel: 020 8489 2919  
Fax: 020 8881 5218  
Email: [natalie.layton@haringey.gov.uk](mailto:natalie.layton@haringey.gov.uk)  
[Natalie.layton@haringey.gov.uk](mailto:Natalie.layton@haringey.gov.uk)

Monday 26 January 2015

This page is intentionally left blank

**MINUTES OF THE NORTHUMBERLAND PARK & WHITE HART LANE AREA FORUM  
AND COMMITTEE  
TUESDAY, 11 NOVEMBER 2014**

Councillors Adje, Bevan, Bull, Peacock and Stennett (Chair)

Apologies Councillor Amin

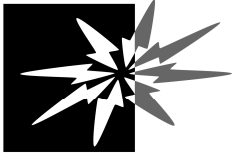
MINUTE NO.	SUBJECT/DECISION	ACTION BY
	<p><b>APOLOGIES</b></p> <p>An apology for absence was received from Councillor Amin.</p> <p><b>NOTED</b></p>	
	<p><b>URGENT BUSINESS</b></p> <p>Nil Items</p>	
	<p><b>DECLARATIONS OF INTEREST</b></p> <p>There were no declarations of interests.</p> <p><b>NOTED</b></p>	
	<p><b>MINUTES OF THE LAST MEETING</b></p> <p><b>RESOLVED</b></p> <p>That the minutes of the meeting of the Area Committee held on 24 July 2014 be signed as an accurate record of the proceedings.</p>	
	<p><b>ISSUES RAISED DURING THE FORUM</b></p> <p><b>i. The Selby 'Green Wheels' project</b></p> <p>Noted the excellent presentation given by the project co-ordinator.</p> <p>Comments expressed by Members that there was no perceived co-ordination of a Borough wide 'bike' policy and that there should be an update given at the next Forum.</p> <p>Arising from this comments were expressed in relation to cycling issues at Tottenham Park, and the Lordship Rec former toilets.</p> <p>The Chair summarised and it was:</p> <p><b>AGREED</b> that officers be requested to bring an update to the</p>	

**MINUTES OF THE NORTHUMBERLAND PARK & WHITE HART LANE AREA FORUM  
AND COMMITTEE  
TUESDAY, 11 NOVEMBER 2014**

	<p>next Forum/Committee in respect of the co-ordination of biking and policy within the Borough and an update of the current operations at Tottenham park, and Lordship Rec.</p> <p><b>ACTION Report and attendee from Council services</b></p>	
	<p><b>ANY OTHER URGENT BUSINESS</b></p> <p>Noted two issues raised by Cllr Bevan which where individual ward based matters in respect of Northumberland Park Hostel, and a planning issue.</p>	
	<p><b>FUTURE MEETINGS</b></p> <p>5 February 2015 – venue to be confirmed</p> <p>Future Agenda Items</p> <p>Tottenham &amp; Northumberland Park Regeneration – Update</p> <p>Public Health – GO surgery provision</p> <p>HAVCO &amp; 3<sup>RD</sup> Sector</p> <p>There being no further business to discuss the meeting ended at 20.55hrs.</p>	

COUNCILLOR A STENNETT

Chair



Haringey Council

## Briefing for Northumberland Park and White Hart Lane Area Forum

Tottenham Regeneration Programme

10<sup>th</sup> November 2014

### 1.0 PURPOSE

- 1.1 To update the Northumberland Park and White Hart Lane Area Forum on the regeneration proposals for the High Road West and Northumberland Park areas.

### 2.0 BACKGROUND – HIGH ROAD WEST

#### High Road West masterplan

- 2.1 For two years the Council has been working with the local community and design consultants Arup to develop a masterplan for the High Road West area. The purpose of the masterplan is to consolidate the local communities' and Council's aspirations for the area into an overarching vision and a set of design principles to inform the Tottenham Area Action Plan – a statutory planning policy document which will guide future development of the area.
- 2.2 The masterplan proposes the regeneration of the Council owned Love Lane housing estate and the land north of White Hart Lane including the Peacock Industrial Estate and aims to deliver;
- a safe and welcoming neighbourhood;
  - an increase in housing choice with 1,200 new homes;
  - an increase in the amount and the quality of both public and private open spaces;
  - more community facilities and social infrastructure - such as a new library, learning and education centre;
  - new health and sports and leisure facilities, as well as new business opportunities, an improved High Road with a wider range of shops with shops and improved environment.

#### White Hart Lane Station

- 2.3 The Council has been working with Transport for London, the Greater London Authority and Network Rail to develop proposals for White Hart Lane station and in February 2014, jointly commissioned architects Landolt + Brown. Landolt and Brown have been commissioned to develop detailed designs and costings for moving White Hart Lane Station entrance to the south, designs for new public realm surrounding the station and the activation of the railway arches.

#### Love Lane People Programme

- 2.4 The Masterplan, and the physical change it promotes, sits alongside the ambitious Love Lane People Programme, which is founded on strong working partnerships between the Council, Love Lane Estate residents and key stakeholders such as Homes for Haringey, local schools and the police. This exciting pilot programme puts residents at the heart of the regeneration programme, ensuring that they dictate the priorities and programme for social regeneration and change in the area. Central to the programme is the improved accessibility and quality of Council services for residents. The programme is based on the Families First (national troubled families programme) and should deliver improved outcomes through better prevention and earlier intervention.

#### THFC

- 2.5 In February 2012 Tottenham Hotspur Football Club (THFC) were granted planning permission for the Northumberland Park Development Project. This project aims to deliver a new 56,000 seat stadium, new housing, a new large supermarket and a new University Technical College.

- 2.6 Phase 1 of the development, which included the supermarket and new University Technical College has now completed - the College opened in September 2014. Phase 2 cannot commence until vacant possession of the land is obtained.
- 2.7 In July 2014, the Secretary of State confirmed the Compulsory Purchase Order required to progress the stadium development. However a judicial review was subsequently submitted against the decision. A hearing has been set for January 2015. Until the judicial review is settled THFC are unable to progress the THFC development.

### **3.0 PROGRESS & NEXT STEPS – HIGH ROAD WEST**

#### Masterplan

- 3.1 From the 13<sup>th</sup> September – 25<sup>th</sup> October 2014 the Council undertook a six week consultation process on the regeneration proposals for High Road West. This consultation sought the communities' views on the following:
- The High Road West Masterplan Framework- the final masterplan for the area developed after two years of consultation with the local community;
  - The proposals for White Hart Lane Station- developed with TfL and architects Landolt and Brown;
  - The Tenant and Leaseholder Guides- which set out our rehousing and compensation assurances for Love Lane residents;
  - The Business Charter - which sets out our assurances relating to valuation, acquisition and compensation for businesses;
  - The Ambrose and Mallory Court Local Lettings Policy- which will determine how the 30 properties on the old Cannon Runner Factory will be allocated to Love Lane residents.
- 3.2 For secure Council tenants living on the Love Lane Estate, this consultation formed part of the statutory s105 consultation.
- 3.3 There have been over 300 responses to the consultation. These responses are currently being analysed and the Council's Cabinet will be asked to make a decision on whether to agree the masterplan in December 2014.

#### White Hart Lane Station

- 3.4 The initial proposals for White Hart Lane Station have been consulted on as part of the consultation process detailed above and will be refined following analysis of the consultation responses. A detailed planning permission will be developed once the funding is secured, this is likely to be in Summer 2015.

#### Love Lane People Programme

- 3.5 As part of this programme 'The Grange Community Hub' has been launched on White Hart Lane. This Community Hub will provide dedicated space for the Love Lane Residents Association and their independent advisor. It will host community events and services will be working from this building. Youth Services are already working out the Grange for two days a week to engage with young people on the Love Lane Estate and signpost them to other services. It is anticipated that other Council services such as repairs, tenancy management etc, will be holding workshops from the Grange and the police will be using the building for their surgeries.
- 3.6 The programmes below are also being progressed through the Love Lane People Programme;
- working with residents to tackle crime;
  - launching an educational project relating to regeneration and Tottenham with primary schools that Love Lane children attend;



- launching 'Well London' -a community based health initiative on both the Love Lane and Northumberland Park Estates;
- negotiating with a range of third sector providers e.g. Band of Brothers, Only Connect etc to increase the range and scope of local offer to young people;
- submission of a £900k funding application to DCLG to support the model and transform the offer to the local community.

### **4.0 BACKGROUND – NORTHUMBERLAND PARK**

#### Northumberland Park Regeneration

- 4.1 Since July 2014, the Council and Homes for Haringey have been working with Fletcher Priest Architects (FPA) to develop:
- A community engagement programme for the estates and surrounding areas;
  - 'Key Principles for Change' for Northumberland Park to inform the Regulation 18 Tottenham Area Action Plan (AAP). The AAP is a planning document which will guide future change and development in Northumberland Park and the whole of Tottenham.

### **5. PROGRESS & NEXT STEPS – NORTHUMBERLAND PARK**

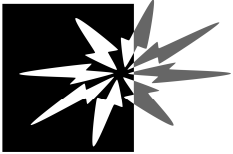
#### Community engagement

- 5.1 Stage 1: Drop-in sessions held over the summer – introducing the process of regeneration and getting feedback on what the Strategic Regeneration Framework strategies mean for Northumberland Park and how they could be developed into Key Principles for Change.
- 5.2 Stage 2: Community exhibitions showing Key Principles for Change – the Council is currently undertaking community exhibitions across the area (Stellar House, Trulock Court, Neighbourhood Resource Centre, Kenneth Robbins House, Park Lane, Sainsbury's) to talk to local people about the proposed Key Principles for Change. We have informed local people that the Key Principles for Change will inform the Tottenham AAP which in itself will guide regeneration, change and development in the local area over the next 15 years.
- 5.3 Residents Associations – two separate Residents Associations (RAs) have so far been initiated, the first covering Stellar House, Altair Close and The Lindales; the second covering Northumberland Park and Park Lane.
- 5.4 Wider community activities – the 'Tottenham Shop' at 163 Park Lane is being used as a base for the engagement activities, and the Council is working with partners to develop a programme of activities to ensure the shop is being utilised as a community hub.

#### Developing the 'Key Principles for Change'

- 5.5 Key Principles for Change (informed by feedback received at the summer drop-in sessions) have been developed covering: new and better homes; open spaces; better connections across the area; and community facilities. Following further community engagement, they will inform the policies in the Tottenham AAP.

This page is intentionally left blank



Haringey Council

**Briefing note for Northumberland Park and White Hart Lane Area Forum**

**Smarter Travel and Leisure Services Cycling Projects/Activities**

**Date 5<sup>th</sup> February 2015**

**Purpose of Briefing**

To detail how Haringey Council encourages cycling – including a summary of the key cycling projects that are being undertaken as part of the Smarter Travel and Leisure Services programmes during 2014/15.

**SMARTER TRAVEL CYCLING PROJECTS**

**Cycle Training**

Cycle Training is delivered by an external organisation called Cycling Instructor within most primary schools to year 5 and 6 pupils to Bikeability Level 2 as well as to some year 3 and 4 pupils to Bikeability Level 1. Cycle Training is also offered to individuals over 9 years old within the Borough up to Bikeability Level 3. Courses are also run at Finsbury Park and Lordship Recreation Ground for those aged 9 + in the summer and half term holidays (weather permitting). We also fund two schools to deliver their own Cycle Training – North Harringay and Risley Avenue Primary Schools.

From April to December 2014:

- 752 pupils received cycle training (this is inclusive of 41 pupils from North Harringay and 96 from Risley Avenue school)
- 333 individuals received cycle training

We also offer cycle training to secondary schools and are currently working with Cycling Instructor and the Police to encourage more secondary schools to participate.

As a method of sustaining cycle training in schools and communities, 11 teaching staff/community workers undertook the Cycle Instructor Training course with Cycling Instructor since January 2014. There will be continued emphasis on this training with a long term goal of increasing cycle training provision within Haringey.

**Organised Cycle Rides**

British Cycling run a number of organised cycle rides for all within Haringey which are promoted by Smarter Travel. In addition 4 Smarter Travel staff members are trained British Cycling Breeze ride leaders. Breeze is a programme run by British Cycling to encourage more women to cycle through organised cycle rides. From 1<sup>st</sup> April to 31<sup>st</sup> December there were 9 organised rides for all and approximately 10 Breeze Rides. A total of 104 people took part in the rides. Bikes are available at Lordship Recreation Ground for those who do not have access to a bike but wish to attend a Breeze Ride.

**Active Travel Community Projects**

These are project's run by community organisations that promotes and supports residents to walk or cycle rather than drive their cars. This might be through setting up a walking or cycling club to promote these two aspects, setting up a bike loan scheme, or setting up a bike maintenance programme where participants learn how to fix bikes themselves, which will keep them cycling. Projects funded from September 2013 to August 2014 included:

- Recycle the Way you Travel run by Bike Works offered 24 residents the opportunity to build a bike, maintain it and undertake Bikeability training.
- Cycling for Healthier and Closer Communities by Living Under One Sun which will offer cycle rides, fun day events, taster sessions at the Lee Valley Velopark, social screenings of major cycling events, promote Smarter Travel to 1600 residents and increase sustainable modes of transport by 100 journeys per week.

- Green Wheels by the Selby Centre Cycle Fun by Tottenham Hotspurs Foundation (THF) included organised cycle rides, instructor ride leader training and beginners one to one cycling.
- Bike Maintenance course (by THF) aimed at young people to give them the skills to maintain their own bike.

This year we approved the funding of 7 new Active Travel projects. Projects are either continuing or will start in January 2015 as follows:

- Recycle the Way you Travel part 2, run by Bike Works is offering 30 residents the opportunity to build a bike, maintain it and undertake Bikeability training.
- Cycling for Healthier and Closer Communities part 2 by Living Under One Sun is continuing to deliver organised bike rides, a cycle cafe, Dr Bike and cycle training around Hale Village and Ferry Lane estate, as well as screening of major cycling events, active travel fun days and trips to the Lee Valley Park Velodrome.
- Green Wheels by the Selby Centre part 2 includes continuing to promote the benefits of active travel, offer bike maintenance and a cycling club for young people, encourage parents, through their children to take up walking, surveying original 121 residents to find out changes in attitude, skills, behaviour in terms of cycling.
- Cycle Fun by Tottenham Hotspurs Foundation (THF) will continue to offer organised cycle rides, instructor ride leader training and beginners one to one cycling to people with mental health, alcohol dependency etc .
- Pedal Power will offer Bikeability level 1 training to members who are able to undertake the training and their carers. They will also offer extra sessions for members.
- Mind in Haringey will offer organised cycle rides for members.
- Markfield project will offer independent travel training to members to support them to actively travel to the project and for other short journeys.

### **Doctor Bike**

Regular Dr Bike Maintenance sessions are held every 2 to 3 weeks in Priory Park, Finsbury Park and Lordship Recreation Ground on Sundays from 2-5pm. We also hold ad hoc Dr Bike sessions at events around the borough. The purpose of these sessions is to ensure that bike's are road worthy and to support residents to continue cycling. From April to December 906 bikes were fixed by Dr Bike.

### **Cycle maintenance courses**

Courses are held once or twice a month (no courses in August, November and January) to support people who would like to learn how to fix and maintain their bikes themselves. Since February 2014 when the course was launched, to the end of November there were 17 courses with 89 participants.

### **Personalised Travel Planning Cycle (PTP Cycle)**

PTP is a direct marketing approach, which can include direct mail, a conversation between a member of the community and a trained travel adviser, and the provision of personalised travel information and incentives.

EU funding was successfully obtained via the London European Partnership for Transport to deliver "Personalised Travel Planning for Cycling" in targeted areas of Haringey. The main project focus is to deliver a modal shift to cycling by using proven PTP methodologies to overcome habitual car use, by delivering an intensive marketing and information campaign target at households (using mosaic data) which have the greatest propensity to change their travel behaviour to more sustainable travel choices. The project is being delivered over 3 years (2013-2016).

Sustrans were contracted to engage with 5,000 households, in the Crouch End area of Haringey, to offer Personalised Travel Planning (PTP) involving one-to-one conversations between residents and trained Travel Advisers who emphasised cycling above other sustainable modes and the provision of personalised travel information and incentives to promote sustainable transport. Additionally, at least a further 1,000 members of the public were to be engaged at 10 events across the Borough, which would be linked in with Haringey Smarter Travel programme

Fieldwork took place from June to beginning of September with the following outputs achieved:

- 2 Project Officers recruited
- 20 field staff recruited
- 600 invitation postcards distributed per week
- 3607 households contacted
- 2658 households interested in receiving information
- 12106 pieces of material were distributed
- 90% of materials were delivered within seven days
- 500 extra participants were engaged through events

Residents are due to be contacted in November/December 2014 and again in June 2015 to see if there has been any short term or long term modal shift as a result of the project.

This project is also being run in four European Cities (Antwerp, Burgos, Riga, and Ljubljana) and in Greenwich in London.

In addition Smarter Travel is currently advertising for an organisation to deliver a similar Personal Travel Planning project in a ward to be confirmed from June to September 2015.

### **Volunteer Cycling Rangers**

Volunteer Cycling Rangers are local people who suggest small improvements to the cycling environment that could be made by Haringey Council to improve cycling. For example street fault reports, cycle parking suggestions etc. There are currently 12 people who have registered to be volunteers and are going through the training process. Anyone interested in registering should visit <http://haringey.cyclingrangers.org.uk/register>

### **Bike it Plus**

5 primary schools and a secondary school within the Wood Green cycle hub were engaged by a Sustrans Bike it Officer to undertake numerous cycling activities as part of the Sustrans Bike it Plus Programme. The Scheme ran from September 2013 to July 2014 and engaged children and parents in organised bike rides, Dr Bikes, cycle maintenance, bikers breakfasts (for those cycling to school) and a number of other activities aimed at encouraging young people to cycle to school. The scheme was part funded through specific funding from TfL with match funding from the Smarter Travel budget.

### **Funding support for cycling clubs**

Smarter Travel also supported the following organisation's with funding for 2014/15:

- Haringey Cycling League (6 Primary Schools are now members) - £5,500
- Pedal Power All Ability Cycling Club - £4,500

We will offer a similar level of funding to the above organisations for 2015/16 (excluding the funding already agreed with Pedal Power for the Active Travel projects).

### **Other Cycling activities since April 2014**

#### ***Festival of Cycling***

This is the second tri- borough event held in Finsbury Park in conjunction with Hackney and Islington. It took place on Sunday 15<sup>th</sup> June and some outputs from the event are set out below:

- Over 1200 people attended the event
- 150 bikes were security marked by the police
- 130 bikes were fixed by Dr Bike
- 72 people took part in exchanging places – looking at cycling from a lorry drivers' perspective.
- 25 children took part in grass track races
- 108 people took part in Rollapaluza (static bike racing)

- 43 took part in British Cycling coaching sessions for juniors
- 50 took part in scooter training
- 118 people completed a Smarter Travel Survey suggesting a range of measures to encourage more sustainable travel, including the importance of improving off road cycle routes i.e. the river side cycle routes. This will help inform our longer term planning.

Haringey, Hackney and Islington Councils have been shortlisted for this event in the Excellence in Cycling and Walking category at the London Transport Awards which will be held in March 2015.

The Smarter Travel team has already booked Finsbury Park for a third event with Islington and Hackney Council's to take place on 14<sup>th</sup> June 2015.

### ***Bike Week***

Bike Week is an annual opportunity to promote cycling, and show how cycling can easily be part of everyday life. This initiative is supported by Transport for London. Activities undertaken by the Smarter Travel team this year included Dr Bike sessions at all underground stations as well as events on both weekends in various parks around the borough.

### ***Cycle to Work Day***

Held on 4<sup>th</sup> September this is a national event which encourages those who cycle to keep cycling and those who do not to start cycling. On the same day we held a bikers breakfast, Dr Bike maintenance session and an opportunity for anyone interested to sign up to the Cycle to Work Scheme. The scheme gives staff the opportunity to buy a bike for over 40% less and tax free.

### ***Cycle Grants for Schools***

The following schools were successful in gaining extra funding from TfL to support cycling within their schools. The Smarter Travel Team supported the schools with these applications and liaised with TfL.

<b>School</b>	<b>Allocation</b>
Bounds Green Infant School	£2955
Risley Avenue	£3000
St Ignatius RC Primary	£2905
Park View	£2975

Applications for 2015/16 are currently being sent to TfL.

### ***Working with the Metropolitan Police***

We hold regular meetings with the police and they attend events to undertake cycle marking and support us with cycle safety. We are working with them to combat cycle thefts and we attended an event on 20<sup>th</sup> October outside Tottenham Hale station to support cyclists to lock their bikes up safely and also to ride safely.

### ***Haringey Council Pool Bikes***

There are 20 pool bike's which can be used by staff to get around the borough. Bikes can be borrowed on a short or long term basis free of charge. The scheme is run by Smarter Travel with support from Alex House reception.

## **LEISURE SERVICES**

### ***Cycle Forum***

This quarterly meeting arranged by Leisure Services gives all organisations who provide cycling initiatives/activities the opportunity to come together, discuss their provision, come up with solutions to any issues, as well as providing an opportunity for projects to work together to enhance their offer to residents.

**Rockstone Alley**

A grass roots cycling organisation who are based at St Ann's Hospital and have also taken on a 5 year lease for the Info Centre at Lordship Rec. Rockstone provide cycling opportunities for a range of target groups including; people suffering mental ill health and children/young people.

They have recently been commissioned by Leisure to provide cycling opportunities for inactive people who live near Lordship Rec as part of the Tottenham Active Project

**Haringey Play Association and Selby Centre**

Will soon be offering cycling activities for women and children as part of the Tottenham Active Project

**Urban Active**

A number of organisations; Rockstone, Bridge Renewal and the Selby Centre have been commissioned by Youth Services (supported by Leisure) to provide cycling opportunities (lead rides and cycling maintenance skills) for young people.

**Cycling on Prescription**

As part of the GP Referral Scheme commissioned by Public Health and managed by Fusion; lead rides are offered to those who have been referred to the scheme. The cycles were purchased by Smarter Travel and are stored in a container at Broadwater Farm Estate.

**Recommendations**

For Cllr Stennett's information.

*Denise Adolphe, Smarter Travel Manager and Andrea Keeble, Commissioning Manager*

This page is intentionally left blank



# Haringey's Local Plan 2011-2026

Local Plan Emerging Consultation

Stakeholder Presentation  
February 2015

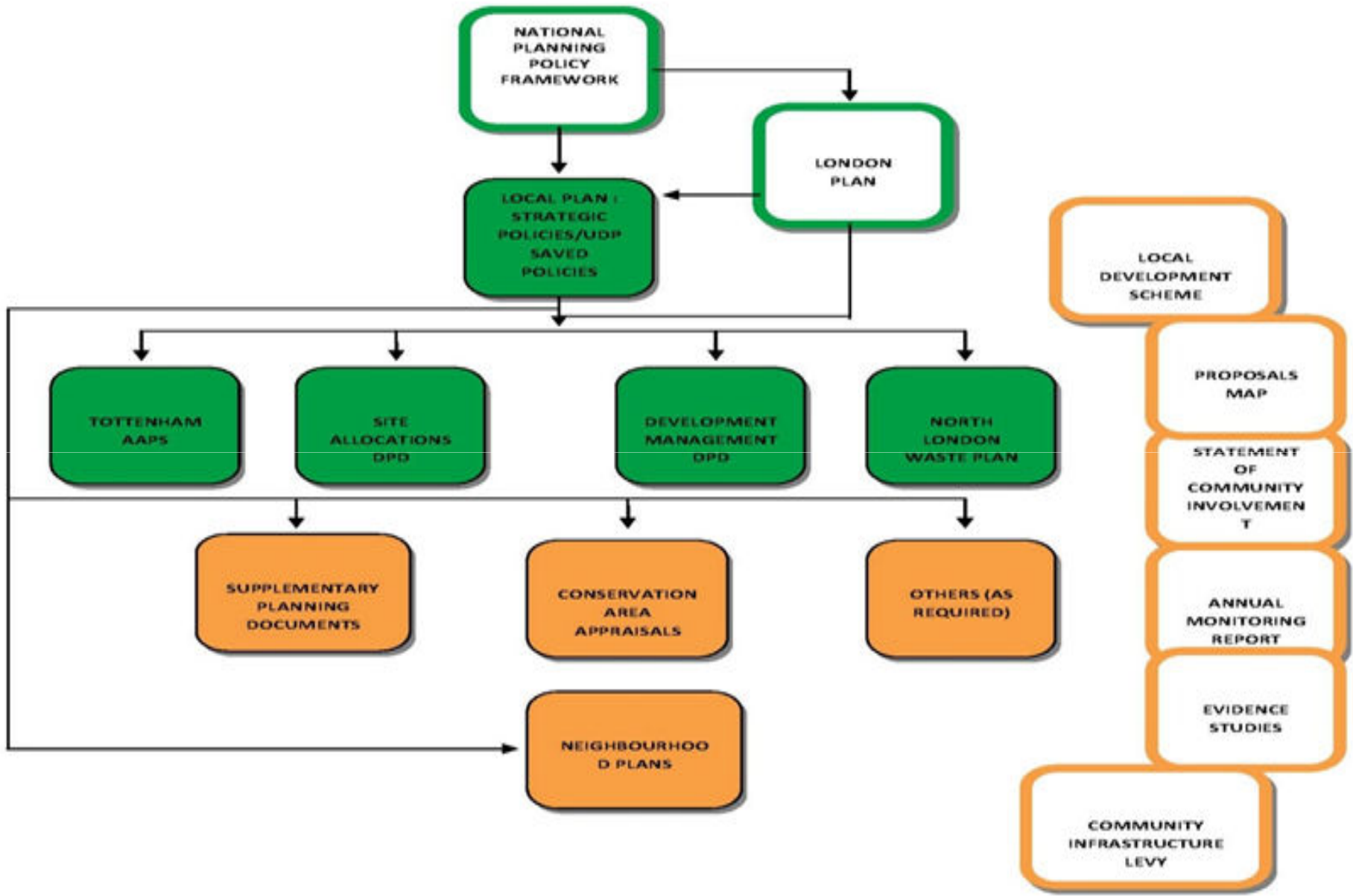
Neil Goldberg  
Planning Policy



# What is a Local Plan?

- Guides development in the borough
- Requirement to prepare a clear, up to date Local plan which:
  - Conforms to National and Regional Policy;
  - Meets local development needs;
  - Plans positively for the development and infrastructure; and
  - Reflects local people’s views on how they wish their Local area to develop.
- The Local Plan comprises a series of documents
- Is used to determine planning applications





# Haringey's Local Plan

- Strategic Policies Local Plan (aka Core Strategy) 2013 (Plan Period 2011-2026)
- UDP Saved Policies

Also includes...

- The London Plan 2011 (2015 version emerging)
- National Planning Policy Framework (NPPF)
- Haringey Supplementary Planning Guidance





# What are we consulting on?



# Why are we consulting?

- Moving from a Unitary Development Plan to Local Plan (previously called ‘The Local Development Framework’)
- The requirement to prepare an up-to-date Local Plan
- New housing and population growth expectations for Haringey, particularly in Tottenham
- Changes to national and regional planning policies



# Amendments to the Strategic Policies Local Plan 2013

- Not a wholesale review
- balances growth across the whole Borough
- Changes in the overarching planning framework, including at the national and regional level, which affect planning locally
- New housing delivery targets
- New evidence base research

# Emerging Spatial Pattern of Growth in Haringey

- Spatial Pattern of growth
  - Growth Areas – Tottenham Hale & Wood Green (including Haringey Heartlands)
  - Areas of Change – Rest of Tottenham (including Seven Sister Corridor, Northumberland Park)
  - Area of Limited Change – Strategic Brownfield Sites





# Development Management Development Plan Document

- ‘ Haringey Housing Charter’
- Delivering homes to meet housing needs
- Protection of open space
- Securing new employment space and managed protection of existing
- Basement policy
- Protection for public houses
- Restricting Hot food takeaways and betting shops
- Protecting family housing

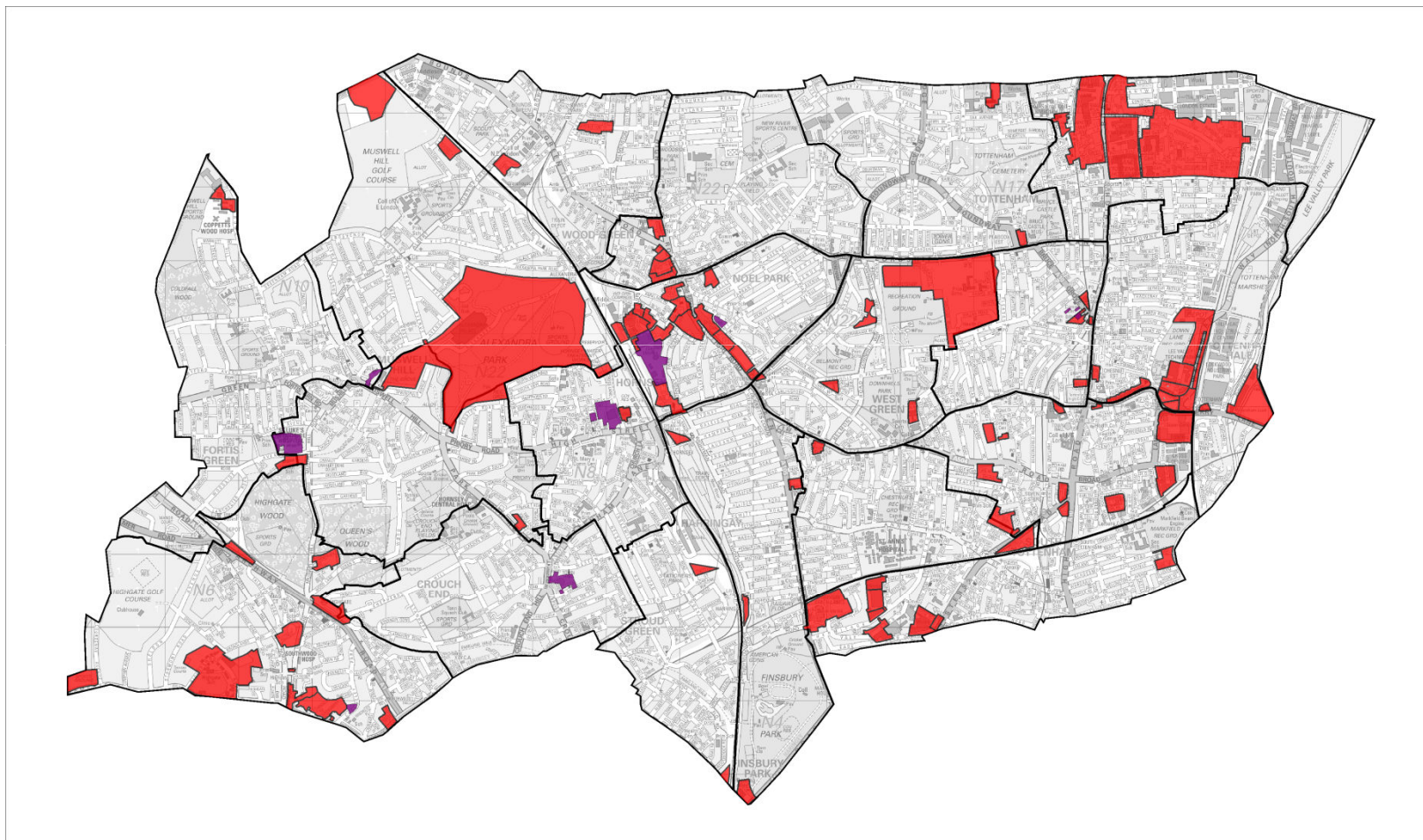
# Tottenham Area Action Plan

- 10,000 new homes and 5,000 new jobs
- Maximising opportunities from Crossrail and funding
- Public realm improvements
- Green link to regional park
- New district centre at Tottenham Hale
- 25 Site allocations for Tottenham

# Site Allocations Development Plan Document (outside Tottenham)

- 63 allocated sites – delivering 9,000 homes
- 100,000m<sup>2</sup> of new employment floorspace
- Protecting licensed waste sites
- Reconfirming town centre boundaries
- Identifying locations for taller buildings and protecting other areas from unsuitable development

# All emerging Allocated Sites in Haringey.



# Next Steps

- 6 week Public Consultation from 9<sup>th</sup> February – 23<sup>rd</sup> March 2015.



# For more information

- Contact the Planning Policy Team on:

## **Planning Policy**

Level 6, River Park House, 225 High Road, Wood Green, N22 8HQ

**Tel 020 8489 1479**

[LDF@haringey.gov.uk](mailto:LDF@haringey.gov.uk)

Or

[Neil.goldberg@haringey.gov.uk](mailto:Neil.goldberg@haringey.gov.uk)

